

49 Life Sciences Parkway • Steinbach, MB R5G 2G7  
 Phone: 1-800-775-0018 • (204) 320-1801  
 Fax: (204) 346-1450  
 Email: info@urbanpark.com  
 Visit Us At: www.urbanpark.com

**urban park**

# SPECIFICATION SHEET

## Brighton Pier Series Bench with Back

OPTION 'A' (Length)

- 4'-0"
- 6'-0"

OPTION 'B' (Mounting)

- Embedded
- Surface Mount

OPTION 'C' (Seat Pan)

See Attached Page

OPTION 'D' (Leg Support)

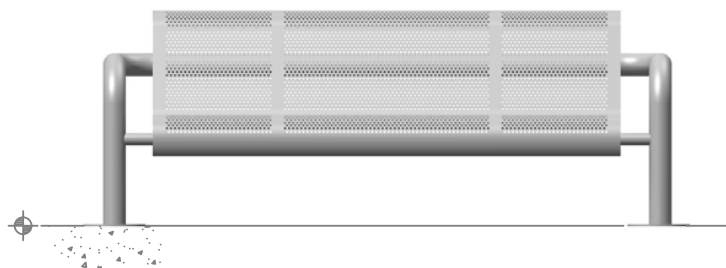
- Dual Support
- Quad Support

OPTION 'E' (Finish)

- Galvanized
- Powder Coat (includes Autophoretic Coating)
- Stainless Steel # 4 Polish

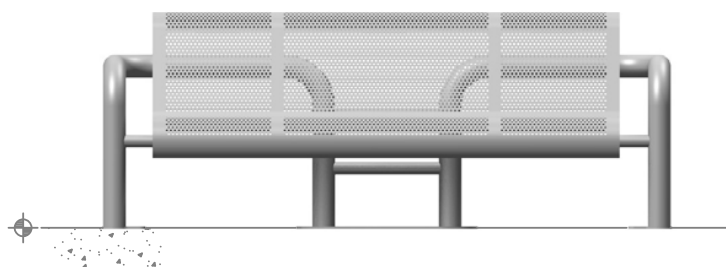
General Notes:

- 1.) Customer responsible for installation.
- 2.) Do not scale drawing.
- 3.) Bench detail shown with embedded and surface mounted options for clarity. Mounting not manufactured as depicted.
- 4.) 6'-0" dual support bench, with perforated mesh seat pan shown.



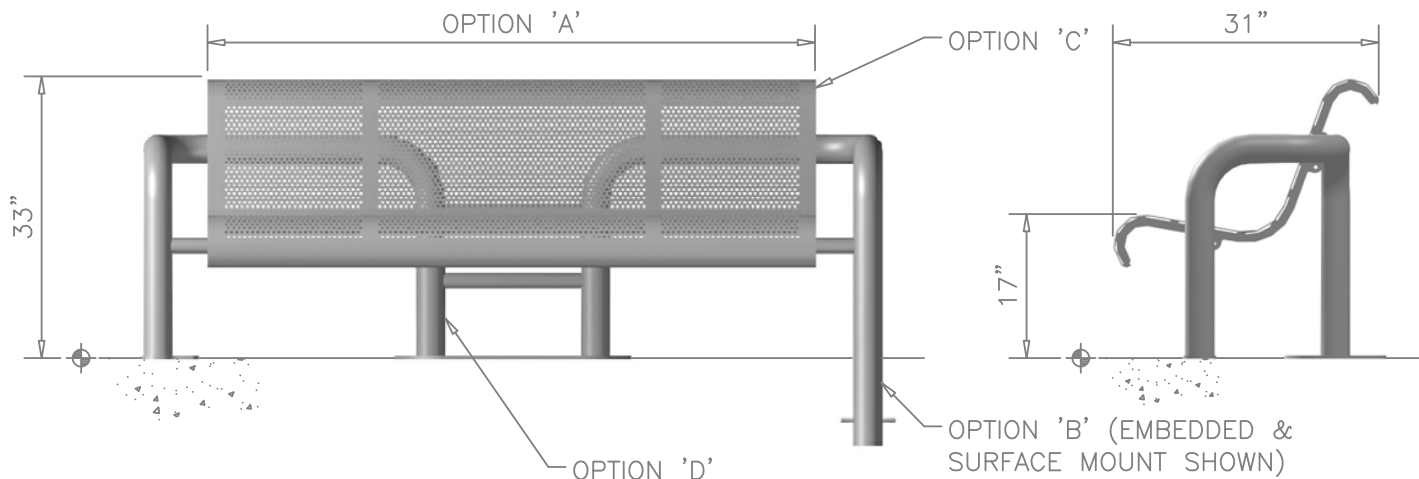
**DUAL SUPPORT**

OPTION 'D'



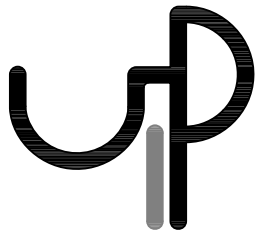
**QUAD SUPPORT**

OPTION 'D'



**BENCH WITH BACK**

BRIGHTON PIER SERIES



49 Life Sciences Parkway • Steinbach, MB R5G 2G7  
Phone: 1-800-775-0018 • (204) 320-1801  
Fax: (204) 346-1450  
Email: info@urbanpark.com  
Visit Us At: www.urbanpark.com

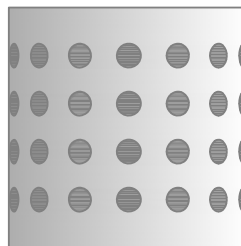
**urban park**

## SPECIFICATION SHEET

### Brighton Pier Series Bench with Back



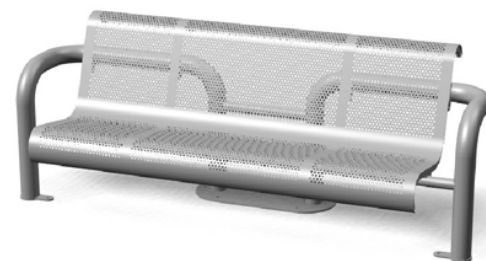
Flat Bar



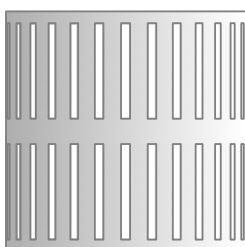
Embossed



Round Bar



Perforated Mesh



Vertical Slot



Solid



Horizontal Slot



Custom