

49 Life Sciences Parkway • Steinbach, MB R5G 2G7
Phone: 1-800-775-0018 • (204) 320-1801
Fax: (204) 346-1450
Email: info@urbanpark.com
Visit Us At: www.urbanpark.com

urban park

SPECIFICATION SHEET

Jackson Series Bench with Back

OPTION 'A' (Length)

4'-0"

6'-0"

OPTION 'B' (Mounting)

Embedded

Surface Mount

OPTION 'C' (Seat Pan)

See Attached Page

OPTION 'D' (Finish)

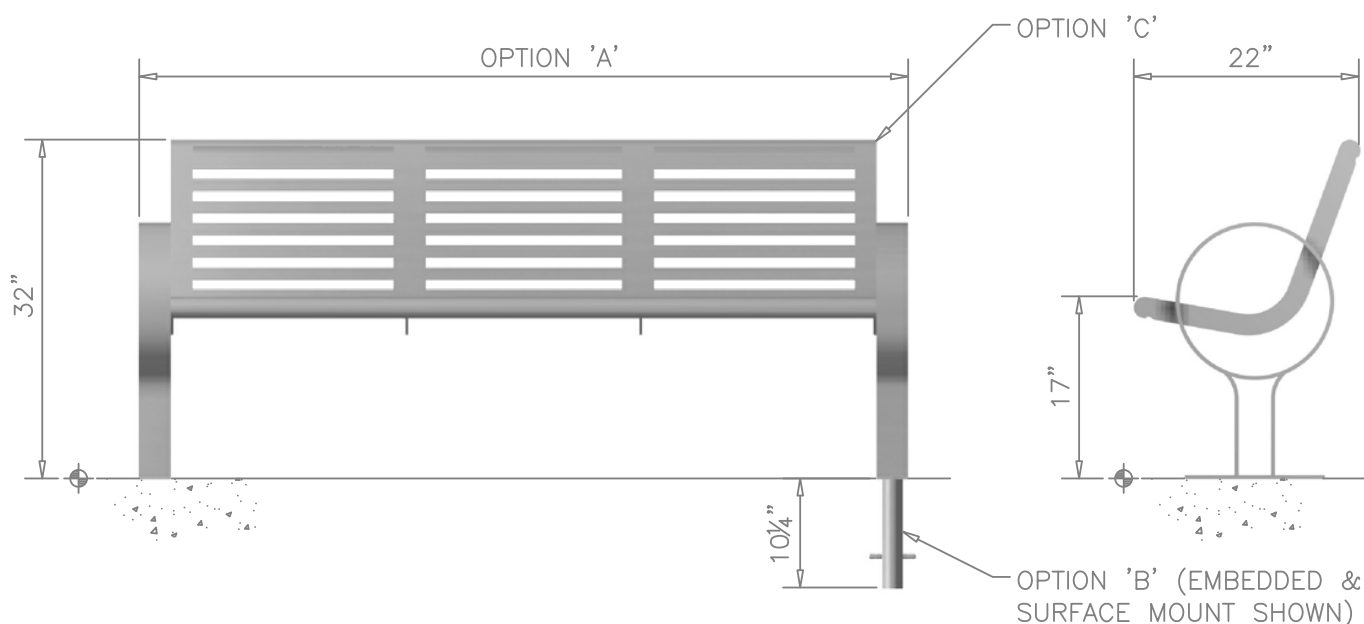
Galvanized

Powder Coat (includes Autophoretic Coating)

Stainless Steel # 4 Polish

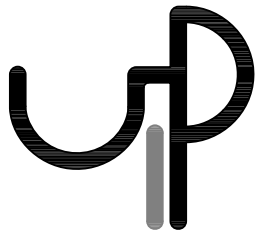
General Notes:

- 1.) Customer responsible for installation.
- 2.) Do not scale drawing.
- 3.) Bench detail shown with embedded and surface mounted options for clarity. Mounting not manufactured as depicted.
- 4.) 6'-0" bench, with horizontal slot seat pan shown.



BENCH WITH BACK

JACKSON SERIES



49 Life Sciences Parkway • Steinbach, MB R5G 2G7
Phone: 1-800-775-0018 • (204) 320-1801
Fax: (204) 346-1450
Email: info@urbanpark.com
Visit Us At: www.urbanpark.com

urban park

SPECIFICATION SHEET

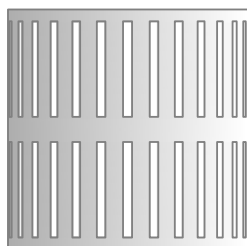
Jackson Series Bench with Back



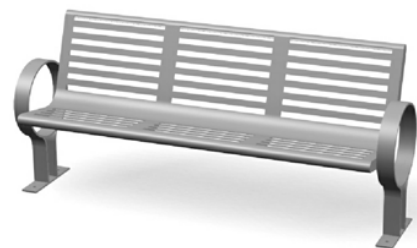
Flat Bar



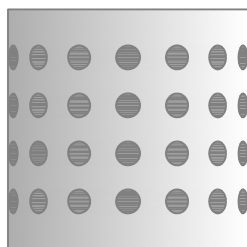
Round Bar



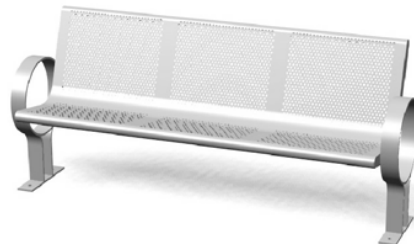
Vertical Slot



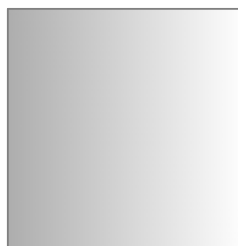
Horizontal Slot



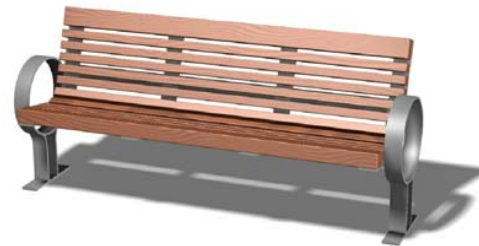
Embossed



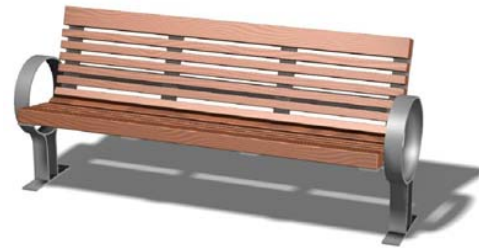
Perforated Mesh



Solid



Wood



Recycled Plastic



Custom