

49 Life Sciences Parkway • Steinbach, MB R5G 2G7  
 Phone: 1-800-775-0018 • (204) 320-1801  
 Fax: (204) 346-1450  
 Email: info@urbanpark.com  
 Visit Us At: www.urbanpark.com

**urban park**

# SPECIFICATION SHEET

## Jackson Series Litter Receptacle

OPTION 'A' (Mounting)

- Embedded
- Surface Mount

OPTION 'B' (Side Panel)

- Recycled Plastic
- Wood

OPTION 'C' (Lid Style)

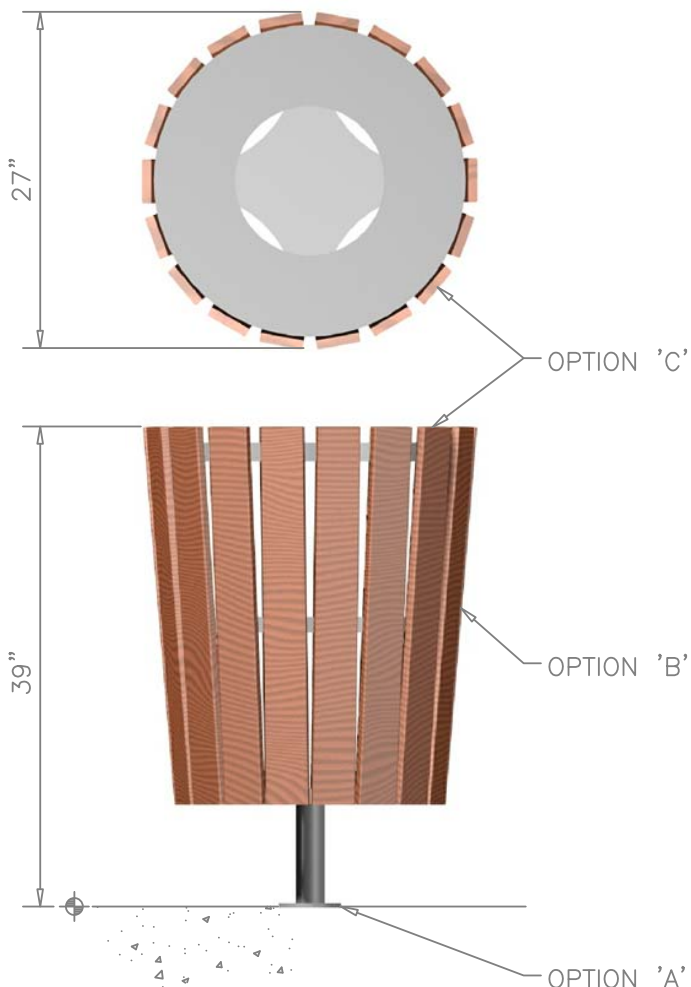
See Attached Page

OPTION 'D' (Finish)

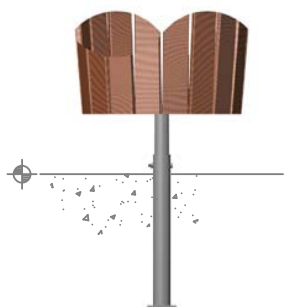
- Galvanized
- Powder Coat (includes Autophoretic Coating)
- Stainless Steel # 4 Polish

General Notes:

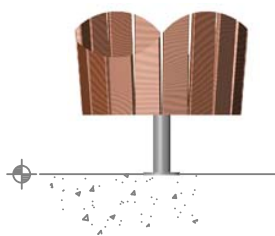
- 1.) Customer responsible for installation.
- 2.) Do not scale drawing.
- 3.) Finished height of litter receptacle depends on requested lid option. Height given is body of receptacle only.
- 4.) Surface mounted receptacle with wood side wall, and flat top shown.



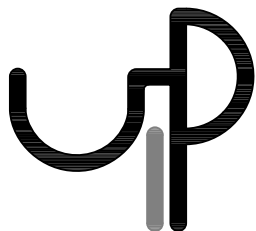
**LITTER RECEPTACLE**  
JACKSON SERIES



**EMBEDDED**  
OPTION 'A'



**SURFACE MOUNT**  
OPTION 'A'

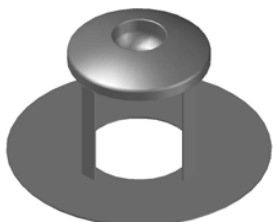


49 Life Sciences Parkway • Steinbach, MB R5G 2G7  
Phone: 1-800-775-0018 • (204) 320-1801  
Fax: (204) 346-1450  
Email: info@urbanpark.com  
Visit Us At: www.urbanpark.com

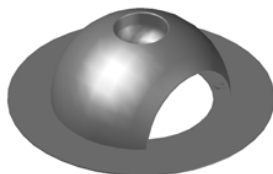
**urban park**

## SPECIFICATION SHEET

### Jackson Series Litter Receptacle



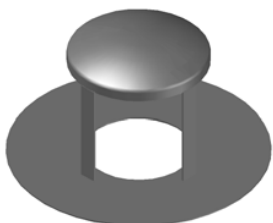
Canopy Top—Dome  
with Ash Urn



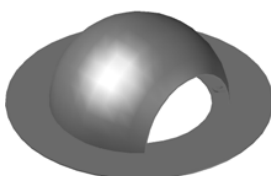
Dome Top—1 Access  
Hole with Ash Urn



Dual Trash/Recycling



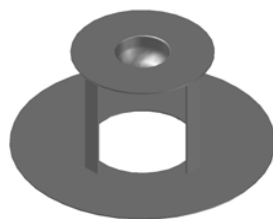
Canopy Top — Dome  
without Ash Urn



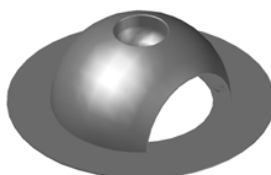
Dome Top—1 Access  
Hole without Ash Urn



Flat Top



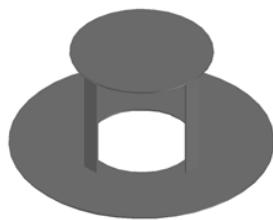
Canopy Top—Flat  
with Ash Urn



Dome Top—2 Access  
Holes with Ash Urn



Recycling Top



Canopy Top—Flat  
without Ash Urn



Dome Top—2 Access  
Holes without Ash Urn